



Medium Chess Puzzle # 0102

By

G Bud Games
<https://gbud.in>

January 12, 2022

Contents

Medium Chess puzzle # 0102 - Mate in 2 moves	3
Medium chess puzzle 0102	3
Solution to medium chess puzzle 0102	4
Solution 1	4
Right moves for the solution to the medium chess puzzle 0102	7
Explanation for the moves	7
Categories of medium chess puzzle 0102	7
medium chess puzzle 0102 chart	8
How to view the solution to medium chess puzzle 0102	10
How to get help for moves in the medium chess puzzle 0102	11
Play chess for free	12

List of Figures

1	Solve this medium chess puzzle 0102. Mate in 2 moves @ https://gbud.in/ghvkn62	3
2	Solve this medium chess puzzle online with solution @ https://gbud.in/ghvkn62	3
3	Initial board position of medium chess puzzle 0102	4
4	Qf1	5
5	Qh1+	5
6	Kxh1	6
7	Rxf1#	6
8	medium chess puzzle 102 chart 1	8
9	medium chess puzzle 102 chart 2	9
10	medium chess puzzle 102 chart 3	9
11	medium chess puzzle 102 chart 4	10
12	Click the solution button to view solutions @ https://gbud.in/ghvkn62	10
13	Click the help button to get help on next move @ https://gbud.in/ghvkn62	11
14	Solve more medium puzzles @ https://gbud.in/chsmdpz	11
15	Solve other puzzles @ https://gbud.in/chsgppz	11
16	Play chess online for free. Solve puzzles and play with friends	12
17	Solve this puzzle online by scanning this QR code or go to the link below	13

Medium Chess puzzle # 0102 - Mate in 2 moves

Solve this medium chess puzzle and improve your chess games through improvement of your chess strategies and chess tactics.

Puzzle No : 0102

Difficulty level : medium

Description : Mate in 2 moves

Next Move : Black

Player level : Intermediate

Short URL for puzzle : <https://gbud.in/ghvkn62>

Medium chess puzzle 0102

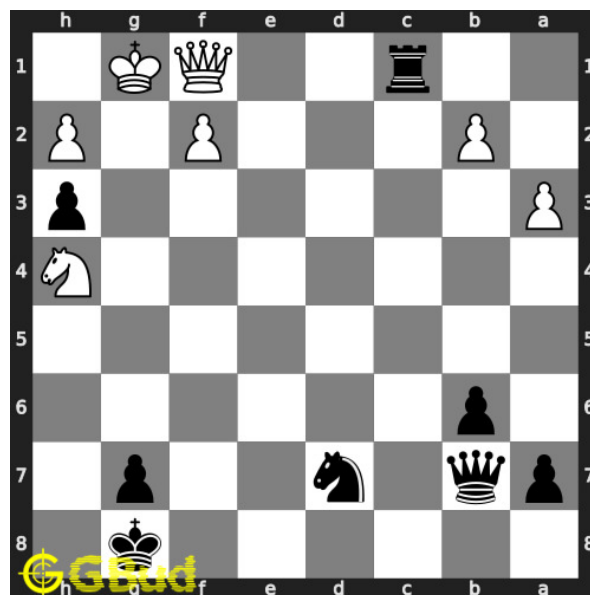


Figure 1: Solve this medium chess puzzle 0102. Mate in 2 moves @ <https://gbud.in/ghvkn62>



Figure 2: Solve this medium chess puzzle online with solution @ <https://gbud.in/ghvkn62>

Dont forget to check out [chess puzzles](#), [easy chess puzzles](#), [medium chess puzzles](#), [hard chess puzzles](#) and [chess puzzles collections](#) .

Solution to medium chess puzzle 0102

At this puzzle, next [move](#) is by [Black](#). The objective of the puzzle is to mate in 2 moves.

See the interactive solution at the [puzzle page](#)

Solution 1

Initial board position This is the initial board position of medium chess puzzle 0102.

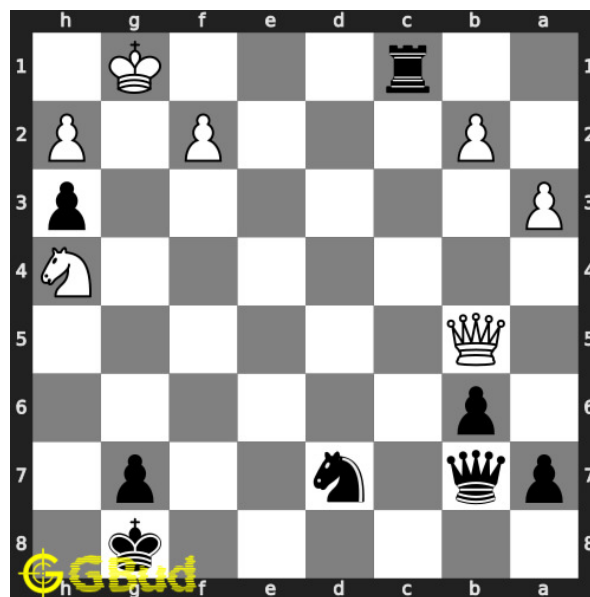


Figure 3: Initial board position of medium chess puzzle 0102

Move 1 Move by white

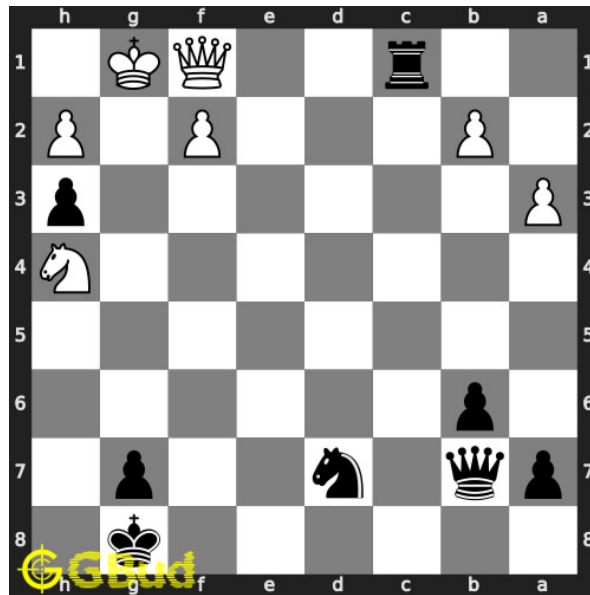


Figure 4: Qf1

opponent's [queen moves](#) to f1 and blocks the [check](#) threat.

Move 2 Move by black

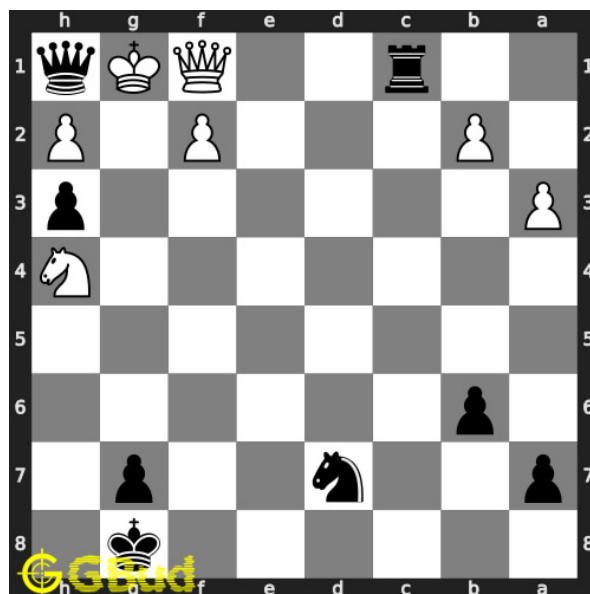


Figure 5: Qh1+

your [queen sacrifices](#) itself to attract the [king](#) to h1 so that the support to their [queen](#) is removed

Move 3 Move by white

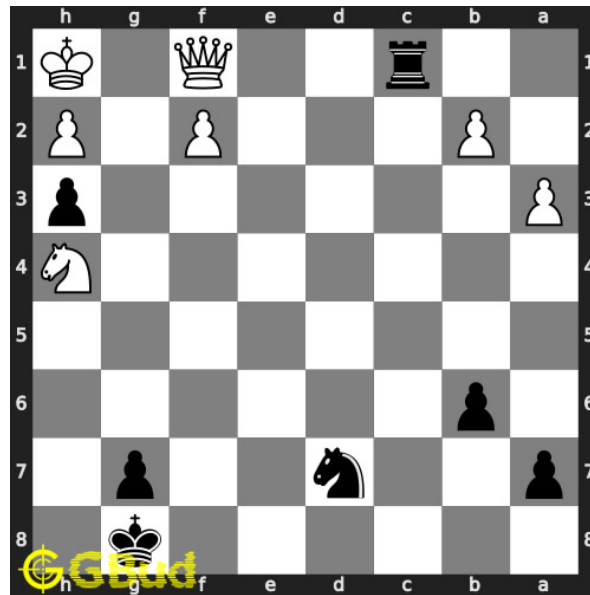


Figure 6: Kxh1

this is a zugzwang move as this forces opponent's king to respond. opponent's king captures your queen.

Move 4 Move by black

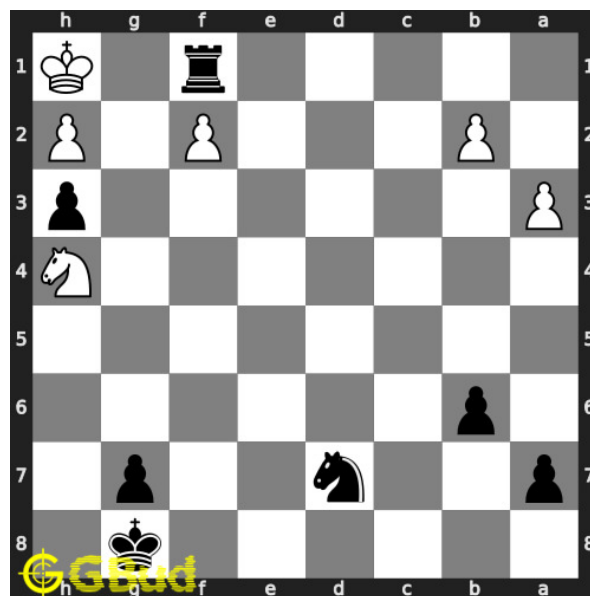


Figure 7: Rxf1#

your rook captures opponent's hanging queen and checkmate. opponent's king can't come to g2 due to the attack from your pawn.. this is how you can mate in 2 moves.

Right moves for the solution to the medium chess puzzle 0102

Based on the objective of the puzzle, you have to make the right moves. Following are the right moves

1. Qh1+, Rxf1#

Explanation for the moves

1. Qf1 - Opponent's queen moves to f1 and blocks the check threat.
2. Qh1+ - Your queen sacrifices itself to attract the king to h1 so that the support to their queen is removed
3. Kxh1 - This is a zugzwang move as this forces opponent's king to respond. Opponent's king captures your queen.
4. Rxf1# - Your rook captures opponent's hanging queen and check-mate. Opponent's king can't come to g2 due to the attack from your pawn.. This is how you can mate in 2 moves.
5. For right move - You have moved your queen and rook effectively to win the game. Those are good moves.
6. For wrong move - You could have sacrificed the queen to win the game. Keep trying

Categories of medium chess puzzle 0102

This medium chess puzzle falls in these categories.

1. [Medium chess puzzles](#)
2. [Sacrifice puzzles in chess](#)
3. [Mate in 2 puzzles in chess](#)
4. [Endgame puzzles in chess](#)
5. [Strategy puzzles in chess](#)
6. [Zugzwang puzzles in chess](#)
7. [Rook puzzles in chess](#)
8. [Queen puzzles in chess](#)

medium chess puzzle 0102 chart



Figure 8: medium chess puzzle 102 chart 1



Figure 9: medium chess puzzle 102 chart 2



Figure 10: medium chess puzzle 102 chart 3

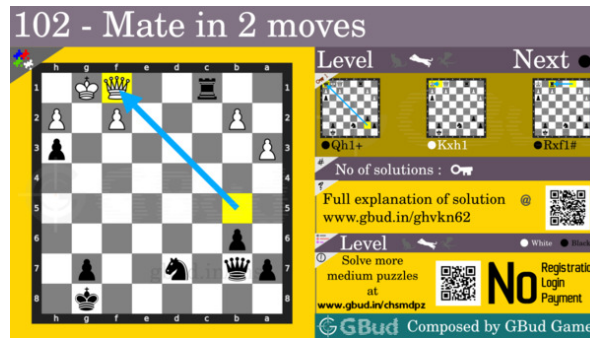


Figure 11: medium chess puzzle 102 chart 4

How to view the solution to medium chess puzzle 0102

To view the [solution to this puzzle](#), follow the steps given below

1. Go to the [puzzle page](#)
2. Click the solution button (Key as shown [below](#)) to view the solution



Figure 12: Click the solution button to view solutions @ <https://gbud.in/ghvkn62>

How to get help for moves in the medium chess puzzle 0102

To get help or the possible next moves in the puzzle, , follow the steps given below

1. Go to the [puzzle page](#)
2. Click the help button (exclamation mark as shown [below](#)) to get help or suggestion on next possible [move](#)



Figure 13: Click the help button to get help on next move @ <https://gbud.in/ghvkn62>



Figure 14: Solve more medium puzzles @ <https://gbud.in/chsmdpz>



Figure 15: Solve other puzzles @ <https://gbud.in/chsgppz>

Play chess for free

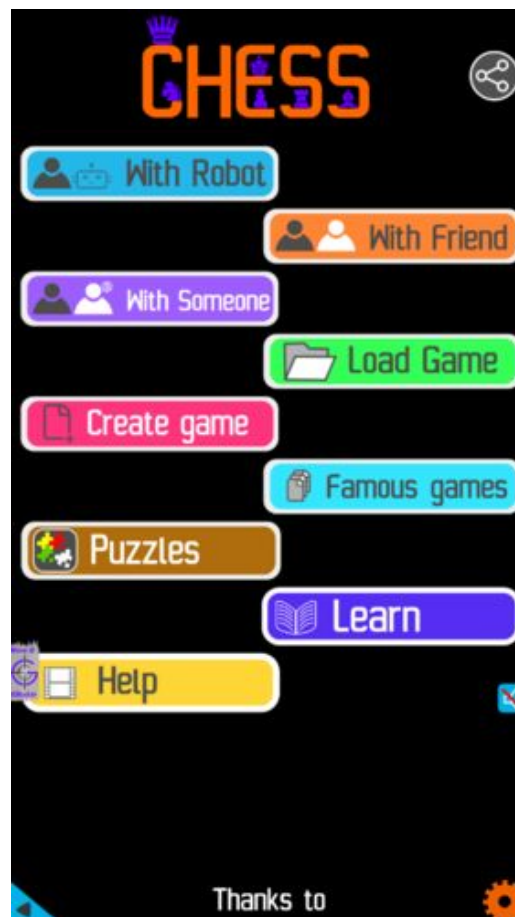


Figure 16: Play chess online for free. Solve puzzles and play with friends

Play chess for free at <https://gbud.in/chs>

We present you a platform to play chess online with friends for free. No need to install any app. You can play chess for free without registration or login.

Simple. You can do several chess related activities.

1. [solve chess puzzles](#)
2. [learn about chess](#)
3. [play chess with computer](#)
4. [play chess with friend](#)
5. [create your own chess games](#)

6. [fen viewer](#)
7. [fen editor](#)
8. [fen generator](#)
9. [pgn viewer](#)
10. [chess board editor](#)
11. [view famous chess games.](#)



Figure 17: Solve this puzzle online by scanning this QR code or go to the link below

<https://gbud.in/ghvkn62>

Read the latest article on Medium Chess puzzle # 0102 - Mate in 2 moves by scanning this QR code or click the link

Previous article : [« Medium Chess puzzle # 0101 - Gain opponent's rook](#)

Next article : [Medium Chess puzzle # 0103 - Stop opponent's promotion](#)
»

[Back to top](#)

[Contact Us](#)